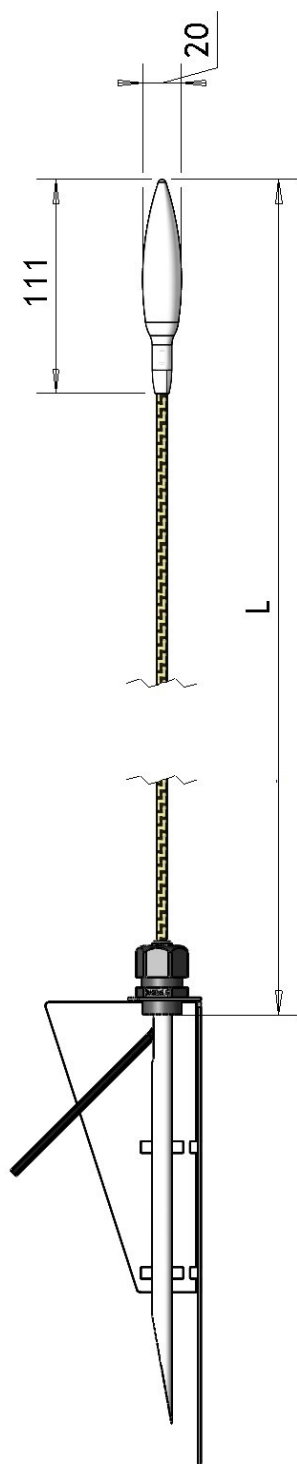


Swaying Reed

Carbon tube



A very elegant light fixture to give a beautiful light scheme in both indoor but mainly outdoor environments, where the gentle wind will catch the reed and make it sway in the breeze.

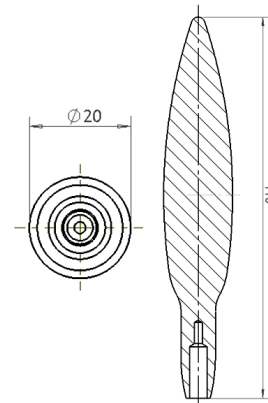
The very discreet carbon reed structure makes it a fascinating lighting solution both aesthetical and functional and create not only light but also a captivating illumination. The Swaying Reed with fibre tube is useful in public spaces and open areas where it can be enjoyed in hotel gardens, spas, malls, city centers, etc.

The reeds come with all necessary mounting and connection to fibre harness. The harness must be specified separately due to decisions on lengths.

The design and dimension of this standard range can be modified for a custom product request.

Swaying Reed

- For outdoor and indoor use
- Black/clear
- Height customised on request
- Developed for outdoor environment
- Fibre optical system
- Diff. Top versions on request



IP 68

0,3 Kg/1m

+/- 45°

360°

Swaying Reed

| | |
|---------------------|------------------------------|
| Material | Carboon, plastic and other |
| Size (D x H) | Ø20 x 1000mm |
| Colour | Black/Clare (others on req.) |
| Light point | Max Ø2.0 mm |
| Terminat cornection | Ø6mm |
| Max bending angle | 30° |
| Cleaning | Dry cloth or air |

| | Item no. |
|--|-----------|
| Swaying Reed, Fibre tube, 1.0 m Ø2.0 PMMA | 0313 0480 |
| Swaying Reed, Fibre tube, 0.25 m Ø2.0 PMMA | 0313 0482 |
| Swaying Reed, Fibre tube, 0.5 m Ø2.0 PMMA | 0313 0485 |
| Swaying Reed, Fibre tube, 0.75 m Ø2.0 PMMA | 0313 0487 |
| Accessories | |
| Ground spike for swaying reed | 0313 0468 |